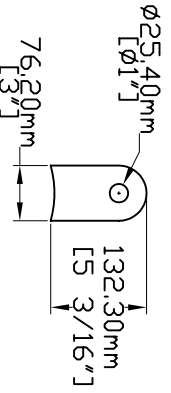
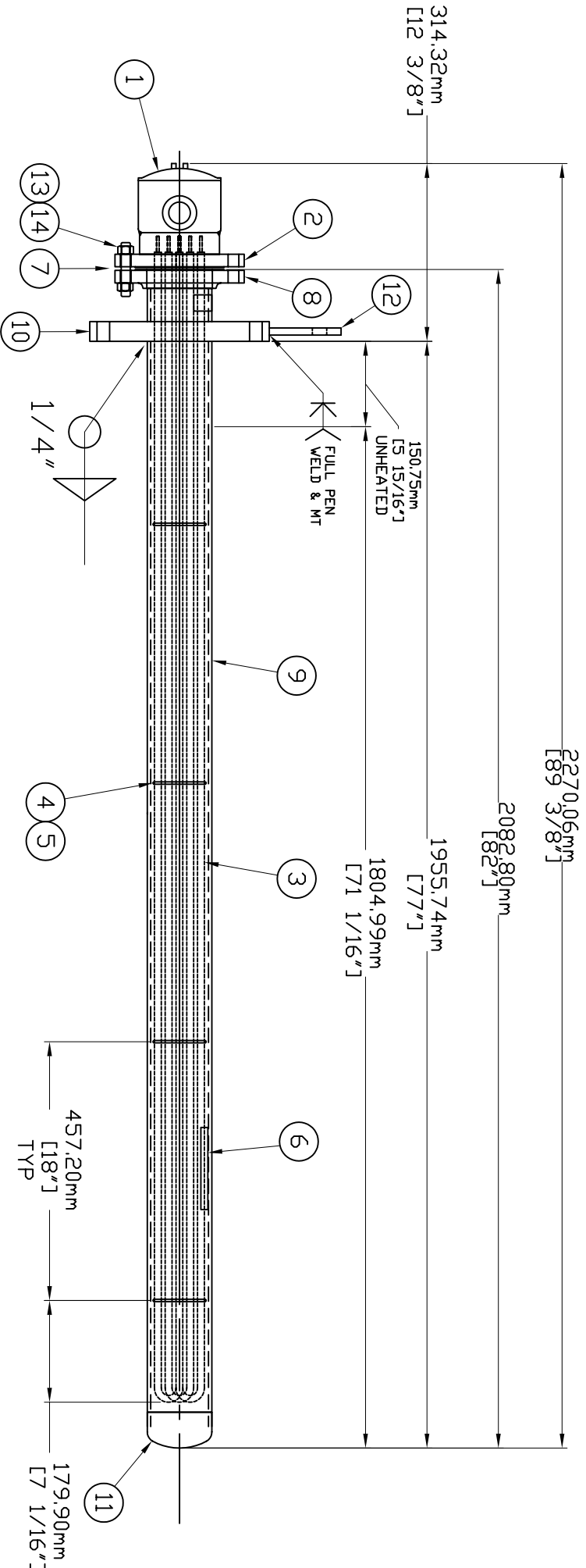


All Dimensions Are In Inches Unless Indicated Otherwise



LIFTING LUG

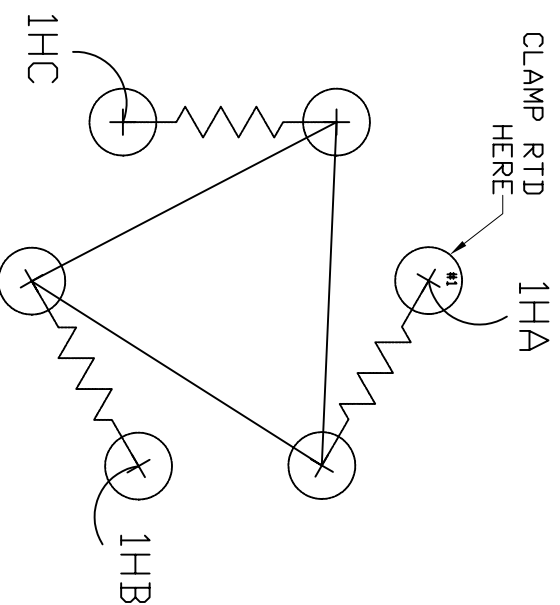
- CSA NOTES:
1. TERMINAL HOUSING TO BE HYDROSTATICALLY TESTED @ 480 PSIG FOR ONE MINUTE.
  2. IMMERSION HEATER TO BE HYDROSTATICALLY TESTED PER SHOP STANDARD 400 PSI FOR TEN MINUTES.
  3. HEATER TO BE HI-POT TESTED @ 2113 VOLTS FOR ONE SECOND.
  4. THREAD TOLERANCE FOR HOUSING CONDUIT IS 1/2 TO 3/2 TURNS (PAST GAUGE NOTCH).
  5. THE TEMPERATURE RATING FOR ALL ELECTRICAL CONDUCTORS ENTERING THE TERMINAL ENCLOSURE MUST BE EQUAL TO OR GREATER THAN THE SUPPLY WIRE RATING STAMPED ON THE NAMEPLATE.

GAUMER PROCESS TAG # K1-21P-1BA-27-HEE-00  
 IFA4F3N80H4YERRTD  
 www.gaumer.com  
 (800)460-5200  
 Houston, Texas

CAT. NO.	IFA4F3N80H4YERRTD
VOLTS	380
PH	3
KV	5.2
TYPE COND/ANK DES.	T3
CL. II, III, IV	BCD
CL. I, II, III, IV	200
CL. I, II, III, IV	08-4130-
CL. I, II, III, IV	345/50
CL. I, II, III, IV	200

USE SUPPLY WIRE SIZING PER AT LEAST 2000  
 USE IN MANUFACTURING LOCATION  
 PREHEATING UTILIZED IN REVISIONS  
 REFER TO INSTALLATION AND OPERATION MANUAL, IFA-CH OR IFA-3H

PUT VESSEL TAG#  
 HERE.  
 SEE NOTE 5.



LD4F3N Indirect SXH-150#1TC.

REV.	DATE	COMMENT	BY	APPD
0	2/6/08	FIRST ISSUE-IFA	DS	RR
1	4/1/08	ISSUED FOR CONSTRUCTION		

ITEM	QTY	DESCRIPTION	MATERIAL	PART NO.
1	1	ER TERMINAL HOUSING - W/ TWO 1 1/2" FNPT	CS	ER04
2	1	HEATER FLANGE - 4" 150# RF BLD	SA-105	F040CS1B-03S80-1TC
3	1	HEATING ELEMENTS - 480 V, 8.4 KW, 80" SHEATH, 12" CE	INCOLOY 800	80H4-12CE
4	4	SPACERS - 12 GA. x 3.68" OD	SA-240T304	SPCR04X006S3H-04
5	3	SPACER SUPPORT ROD - 1/4" RND BAR x 73" LONG	SA-479T304	RRR0D-04
6	1	OVERTEMP SENSOR - 100 OHM 3 WIRE RTD	INCONEL 600	RTD-5-72SD
7	1	GASKET - 4" 150# SPIRAL WOUND FLEXITALLIC	304	GASK040F1S
8	1	VESSEL FLANGE - 4" 150# RFSSO	SA-105	F040CS15000
9	1	SHELL - 4" SCH 40 PIPE LENGTH 79.5"	SB-705 N06625	PP040S40N6
10	1	MOUNTING FLANGE - 6" 150# FLAT FACE BLIND 4 5/8" BORE	SA-105	F060CS2B04K
11	1	WELD CAP - 4" SCH 40	SB-366 W/PNCMC	WC040S40N6
12	1	LIFTING LUG - 5.25"x3"x1/2"	SA-36	PLT00HIN48X96-CS
13	8	STUDS - 5/8" x 3.75" LONG CAD PLTD	SA-193 B7	BLT0KX03MB72HC0
14	16	NUTS - 5/8" CAD PLTD	SA-194 2H	BLT0KX03MB72HC0

- GENERAL NOTES:
1. DESIGN CONDITIONS ARE 125 PSI EXTERNAL PRESSURE AT 250°F.
  2. NDE REQUIREMENTS INCLUDE PMI FOR SHELL, CAP AND WELDS, 100% RT FOR SHELL, MT LIFTING LUG & HYDROTEST AT 188 PSI.
  3. FOR THESE VESSELS FLAT FACED MOUNTING FLANGES ARE REQUIRED FOR CUSTOMER CONNECTION.
  4. CLEAN & PAINT HEATER FLANGE, TERMINAL HOUSING AND MOUNTING FLANGE PER CUSTOMER PAINT SPEC
  5. INCLUDE TAG # ON CSA LABEL AND TAG VESSEL PER TABLE BELOW. MATCH HEATER TO THE CORRESPONDING VESSEL AT FINAL ASSEMBLY.
  7. HEATER WEIGHT 50 LBS. VESSEL WEIGHT 120 LBS.
  8. VESSEL SUPPORT TO BE PROVIDED BY OTHERS. REFERENCE PROPOSED DETAIL ON DWG. 4130A8C-SUPPDRT

VESSEL TAG SCHEDULE
SERIAL NUMBER 08-4130-5C
TAG NUMBER K1-21P-1CA-27-HEE-005C
POTABLE WATER STORAGE TANK HEATER
SERIAL NUMBER 08-4130-5D
TAG NUMBER K1-21P-1CA-27-HEE-005D
POTABLE WATER STORAGE TANK HEATER
SERIAL NUMBER 08-4130-6B
TAG NUMBER K1-21P-1BA-27-HEE-006B
FRESH WATER STORAGE TANK HEATER

QTY-3

ISSUED FOR CONSTRUCTION  
 BY: DS DATE 4/1/08

HEATER ASSEMBLY	
VOLTS	380
PH	3
KW	5.2
# CIRC.	1
OHMS/CIRC.	55.54
AMPS/CIRC.	7.90
AMPS + 25%	9.88
LEAD WIRE SIZE	12 GA
LEAD WIRE TYPE	RHTW
HEATER ELEMENTS	80H4-12CE
PART NO.	8.4
KW	480
RATED VOLTS	480
RESISTANCE	27.43

GAUMER PROCESS HEATERS CONTROLS SYSTEMS

13616 Hempstead Highway Houston, Texas USA  
 Phone (713) 460-5200 Fax (713) 460-1444

SCALE NTS DRAWING NO: 4130B8C REV 1 DWG BY DS

DATE 2/6/08 DESCRIPTION IFA4F3N80H4YERRTD

CUSTOMER CONDCO PHILLIPS CHINA, INC.  
 P# A0WU-4-0404-ETS-001/4508337594

NOTICE: This drawing is the property of Gaumer Company Inc. No Copies or unauthorized distribution is allowed without permission.